

## RADIAL FANS

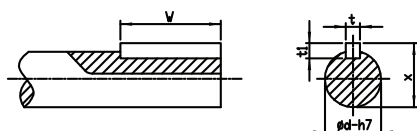
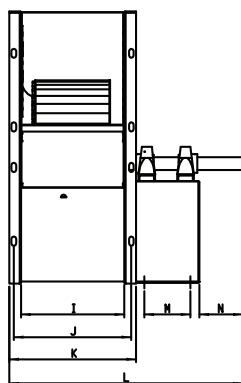
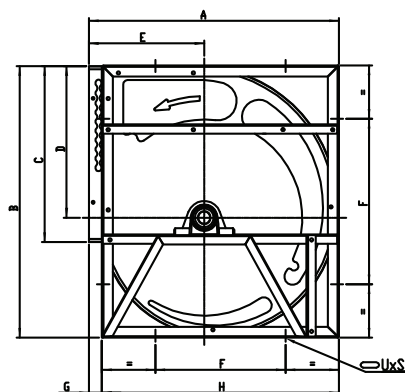


# BRV-S

## LOW PRESSURE CENTRIFUGAL FANS Single Inlet

BRV-S (single inlet fans) can be manufactured for the flow rates between 1000 and 20000 m<sup>3</sup>/h. Max. efficiency with low energy.

### Technical Drawings



#### MATERIAL

: Housing is made of galvanized sheet metal, forward curved fan is made of galvanized sheet metal, shaft is made of ST-45 steel and free axle supported at both ends by permanently greased ball bearings

#### DIRECTIVE SPEED CONTROL

: EN 60335-1, EN 60335-2-80  
: Speed can be adjusted using an optional controller.

#### APPLICATION AREAS

: Ventilation units, central climate units, workplaces, offices, cafes, restaurants, meeting rooms, supermarkets, spor complexes etc. and comfort expected places.

TYPE	AIR FLOW m <sup>3</sup> /h	WEIGHT kg
BRV-S 10-5	5000	9
BRV-S 12-6	10000	13
BRV-S 15-8	14000	17
BRV-S 18-10	20000	38

### Accessories



**BDEB**

TYPE	A	B	C	D	E	F	G	H	I	J	K	L	M	N	t	t1	d	W	UxS
BRV-S 10-5	427	450	290	250	197	280	35	393	180	213	236	415	60	74	8	8	25	65	12X18
BRV-S 12-6	491	522	336	292	229	340	35	453	215	250	272	487	76	83	8	8	25	65	12x18
BRV-S 15-8	573	613	401	341	263	400	35	538	260	293	316	576	150	96	10	8	35	70	12x18
BRV-S 18-10	678	737	476	411	312	200	35	643	300	338	366	656	150	117	10	8	35	70	12x18

Dimensions are in (mm)

